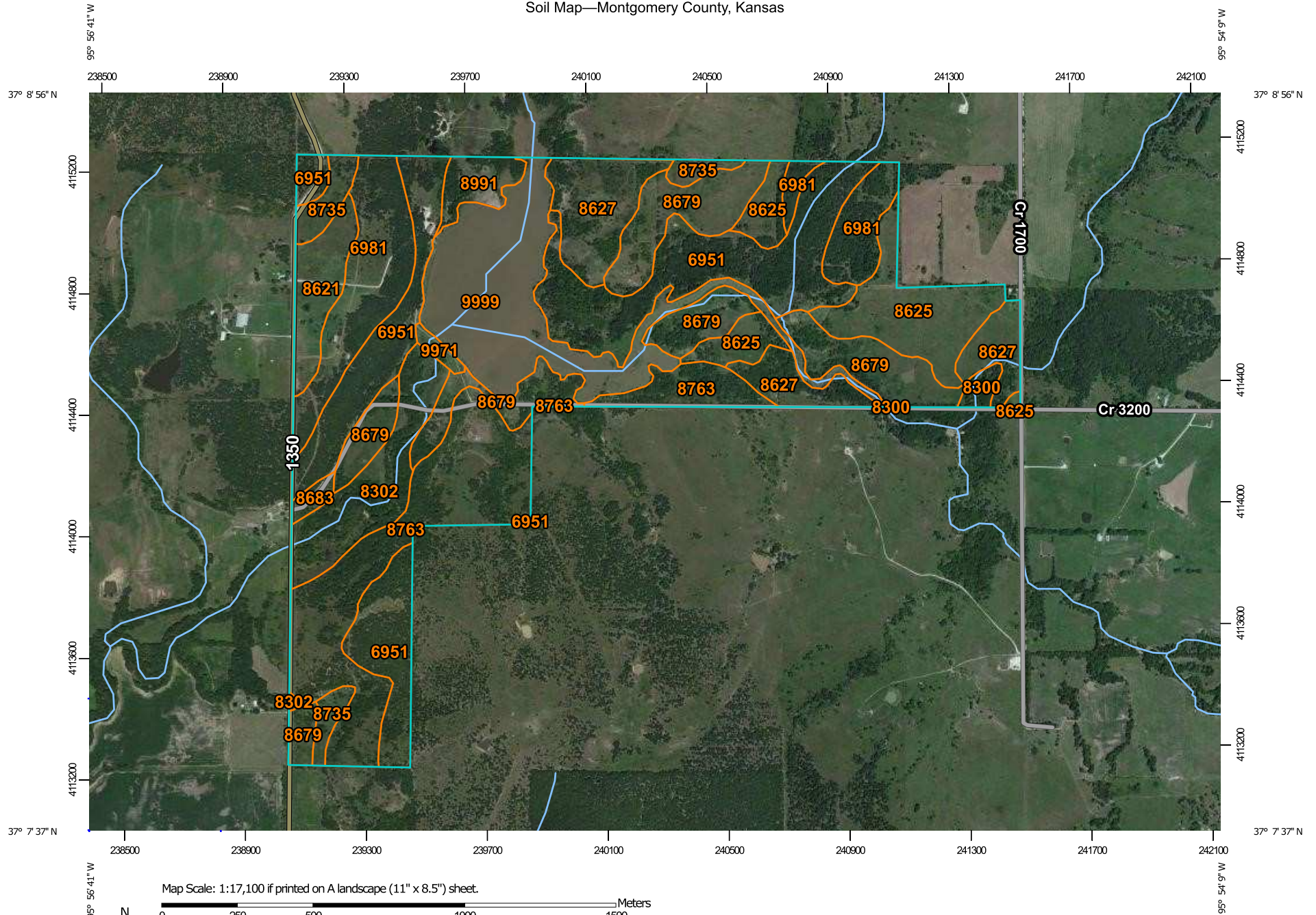
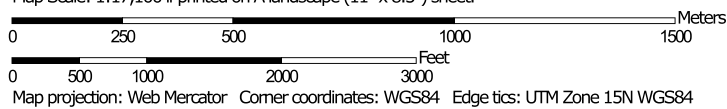


# Soil Map—Montgomery County, Kansas



Map Scale: 1:17,100 if printed on A landscape (11" x 8.5") sheet.




**Natural Resources  
Conservation Service**

Web Soil Survey  
National Cooperative Soil Survey

5/2/2017  
Page 1 of 3

## MAP LEGEND

### Area of Interest (AOI)

 Area of Interest (AOI)

### Soils

 Soil Map Unit Polygons

 Soil Map Unit Lines

 Soil Map Unit Points

### Special Point Features



Blowout



Borrow Pit



Clay Spot



Closed Depression



Gravel Pit



Gravelly Spot



Landfill



Lava Flow



Marsh or swamp



Mine or Quarry



Miscellaneous Water



Perennial Water



Rock Outcrop



Saline Spot



Sandy Spot



Severely Eroded Spot



Sinkhole



Slide or Slip



Sodic Spot



Spoil Area



Stony Spot



Very Stony Spot



Wet Spot



Other



Special Line Features

### Water Features



Streams and Canals

### Transportation



Rails



Interstate Highways



US Routes



Major Roads



Local Roads

### Background



Aerial Photography

## MAP INFORMATION

The soil surveys that comprise your AOI were mapped at 1:24,000.

Please rely on the bar scale on each map sheet for map measurements.

Source of Map: Natural Resources Conservation Service

Web Soil Survey URL:

Coordinate System: Web Mercator (EPSG:3857)

Maps from the Web Soil Survey are based on the Web Mercator projection, which preserves direction and shape but distorts distance and area. A projection that preserves area, such as the Albers equal-area conic projection, should be used if more accurate calculations of distance or area are required.

This product is generated from the USDA-NRCS certified data as of the version date(s) listed below.

Soil Survey Area: Montgomery County, Kansas

Survey Area Data: Version 14, Sep 20, 2016

Soil map units are labeled (as space allows) for map scales 1:50,000 or larger.

Date(s) aerial images were photographed: Jul 23, 2010—Aug 3, 2010

The orthophoto or other base map on which the soil lines were compiled and digitized probably differs from the background imagery displayed on these maps. As a result, some minor shifting of map unit boundaries may be evident.

## Map Unit Legend

Montgomery County, Kansas (KS125)			
Map Unit Symbol	Map Unit Name	Acres in AOI	Percent of AOI
6951	Niotaze-Darnell complex, 6 to 35 percent slopes	120.6	20.1%
6981	Stephenville-Darnell fine sandy loams, 1 to 6 percent slopes	54.9	9.2%
8300	Verdigris silt loam, channeled, 0 to 2 percent slopes, frequently flooded	3.3	0.5%
8302	Verdigris silt loam, 0 to 1 percent slopes, occasionally flooded	32.3	5.4%
8621	Bates loam, 1 to 3 percent slopes	17.7	3.0%
8625	Bates-Collinsville complex, 1 to 3 percent slopes	48.7	8.1%
8627	Bates-Collinsville complex, 3 to 15 percent slopes	47.2	7.9%
8679	Dennis silt loam, 1 to 3 percent slopes	82.2	13.7%
8683	Dennis silt loam, 3 to 7 percent slopes	2.9	0.5%
8735	Eram silty clay loam, 3 to 7 percent slopes	14.5	2.4%
8763	Eram-Talihina silty clay loams, 5 to 20 percent slopes	86.4	14.4%
8991	Zaar silty clay, 1 to 3 percent slopes	9.9	1.7%
9971	Arents, earthen dam	2.4	0.4%
9999	Water	76.2	12.7%
<b>Totals for Area of Interest</b>		<b>599.0</b>	<b>100.0%</b>