

PARCEL 2
168 AC

PARCEL 3
161 AC

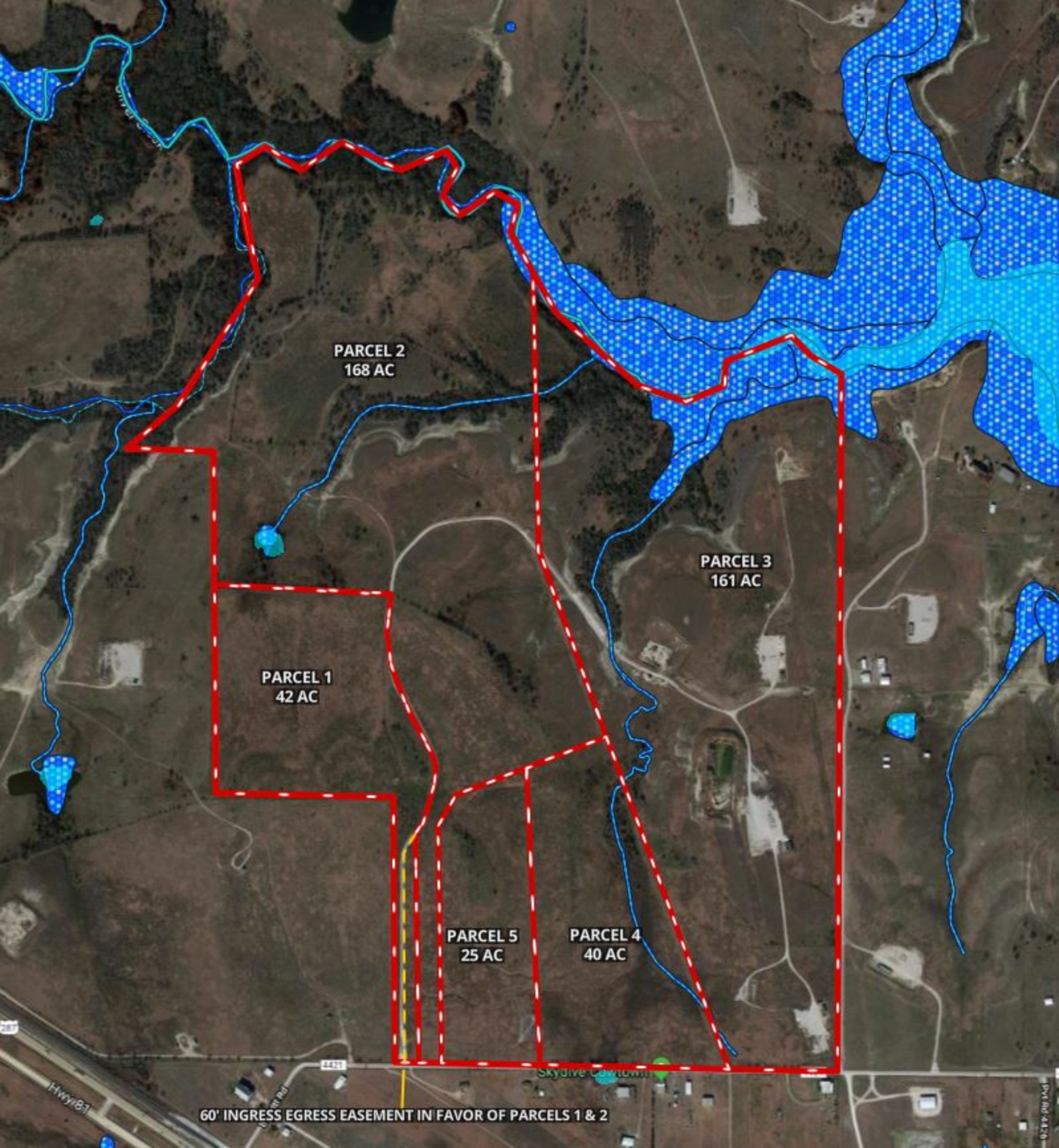
PARCEL 1
42 AC

PARCEL 5
25 AC

PARCEL 4
40 AC

60' INGRESS/EGRESS EASEMENT IN FAVOR OF PARCELS 1 & 2

BM 938



PARCEL 2
168 AC

PARCEL 3
161 AC

PARCEL 1
42 AC

PARCEL 5
25 AC

PARCEL 4
40 AC

60' INGRESS EGRESS EASEMENT IN FAVOR OF PARCELS 1 & 2

CODE	DESCRIPTION	ACRES	%	CAP	
SaC	Sanger clay, 3 to 5 percent slopes	77.9	16.1%	3e	
Fr	Frio silty clay loam, occasionally flooded	35.4	7.3%	2w	
W	Water	3.1	0.6%	-	
PvB	Purves clay, 1 to 3 percent slopes	38.1	7.9%	4s	
SoC	Somervell-Aledo complex, 1 to 8 percent slopes	103.7	21.4%	6s	
VeC	Venus loam, 3 to 8 percent slopes	11.7	2.4%	4e	
ByE	Brackett-Aledo complex, 5 to 20 percent slopes	108.2	22.4%	7s	
SaB	Sanger clay, 1 to 3 percent slopes	37	7.6%	3e	
BoC	Bolar clay loam, 3 to 5 percent slopes	47.9	9.9%	3e	
SgB	Slidell clay, 1 to 3 percent slopes	0.5	0.1%	3e	
BoB	Bolar clay loam, 1 to 3 percent slopes	18.9	3.9%	3s	
SpB	Speck clay loam, 0 to 2 percent slopes	1.8	0.4%	4s	
Totals	484.2 Ac		4.6 Cap. Average		

Boundary 442.4 ac

