

— Existing Contours

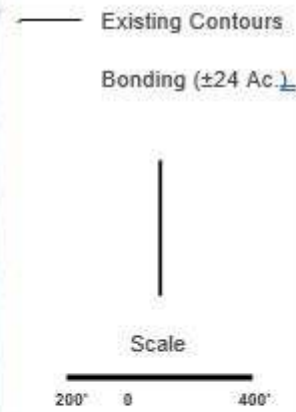
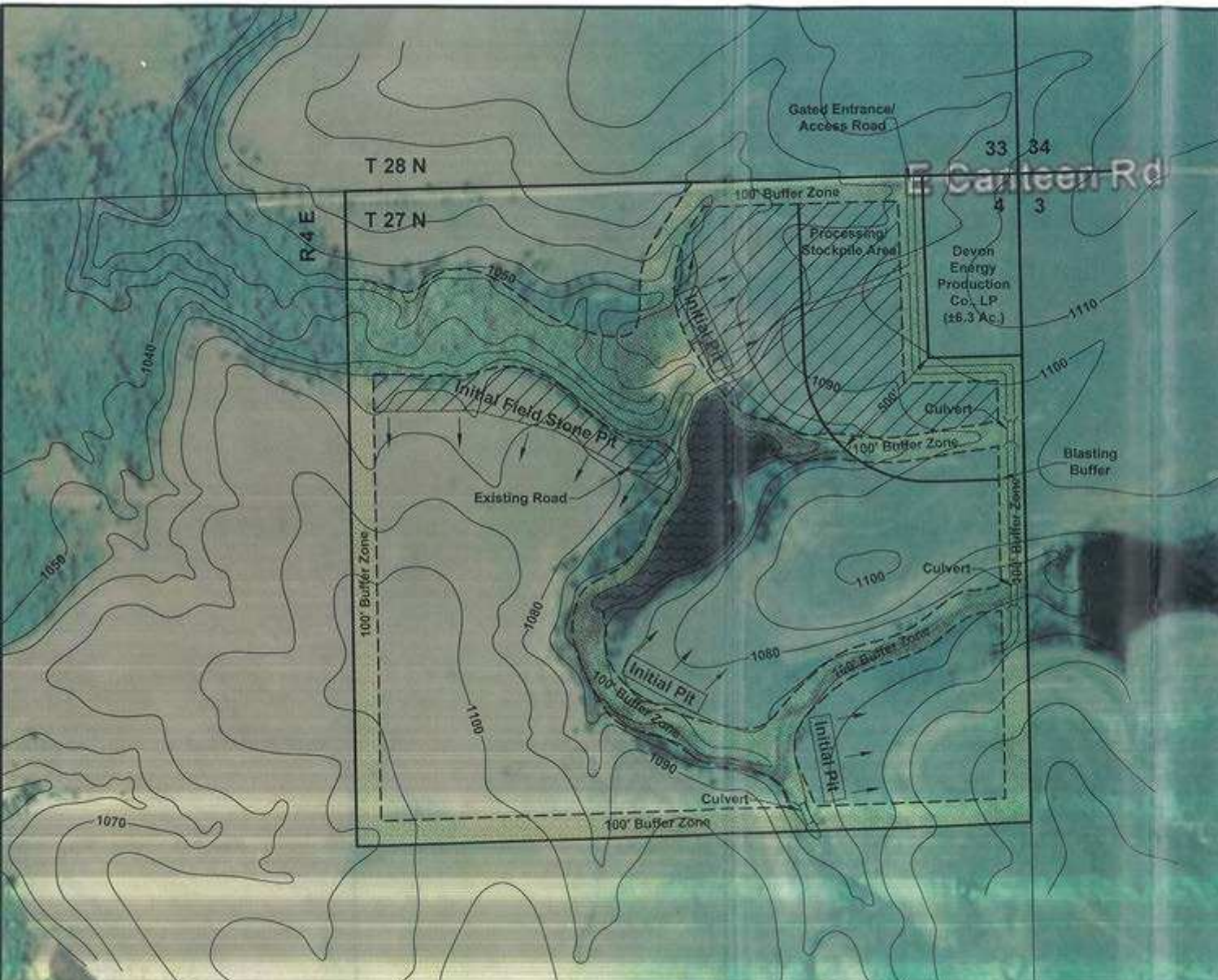
Scale



Summer's Blue Lake Quarry, LLC.  
Blue Lake Quarry Location Map

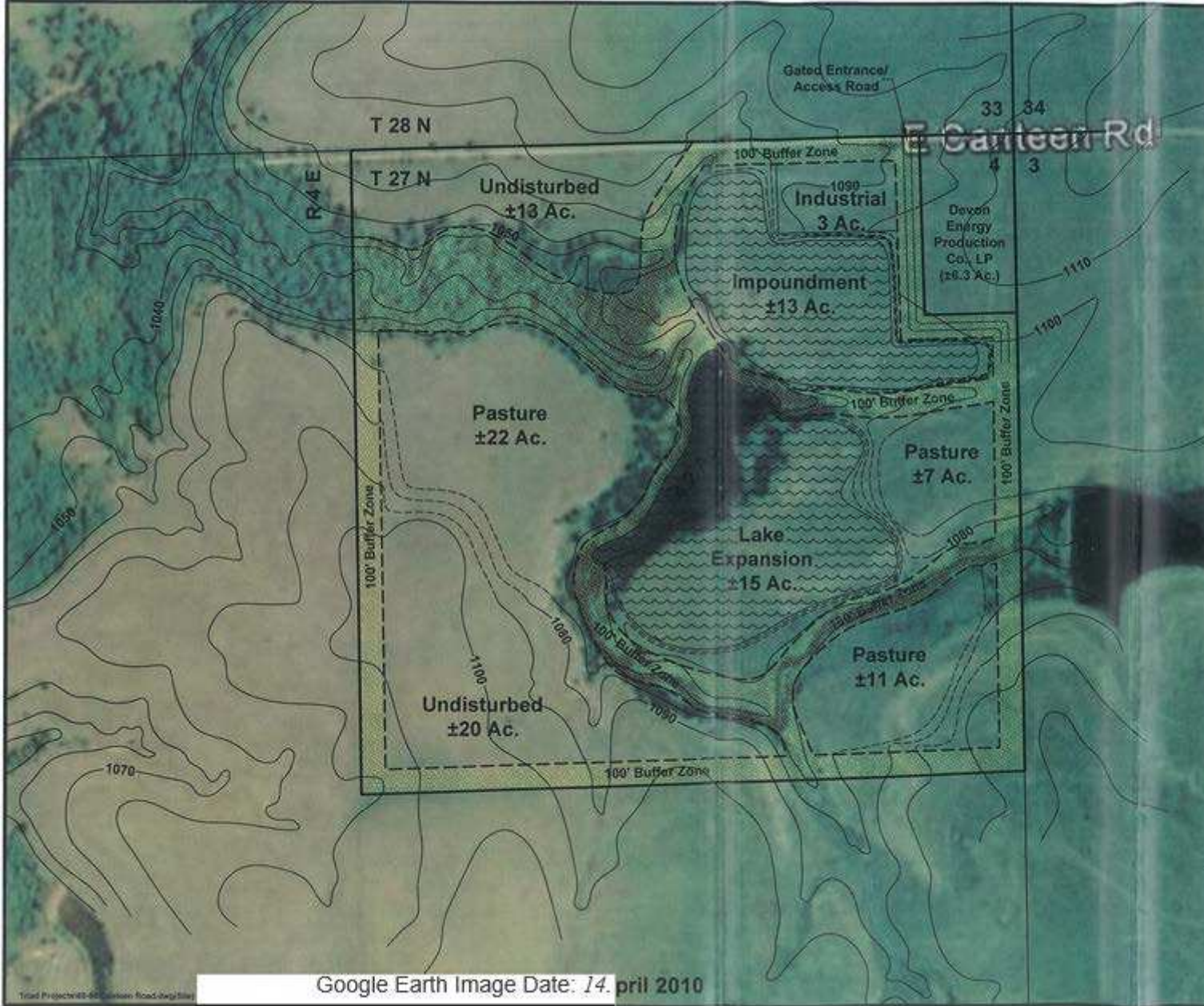
Google Earth Image Date: April 2010

Trail Project 84 - Canteen Road.dwg(5m)

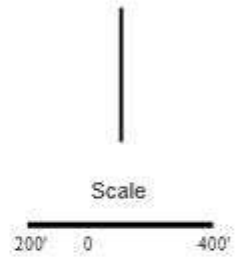


Google Earth Image Date: April 2010

Summer's Blue Lake Quarry, LLC.  
 Blue Lake Quarry Bonding Map

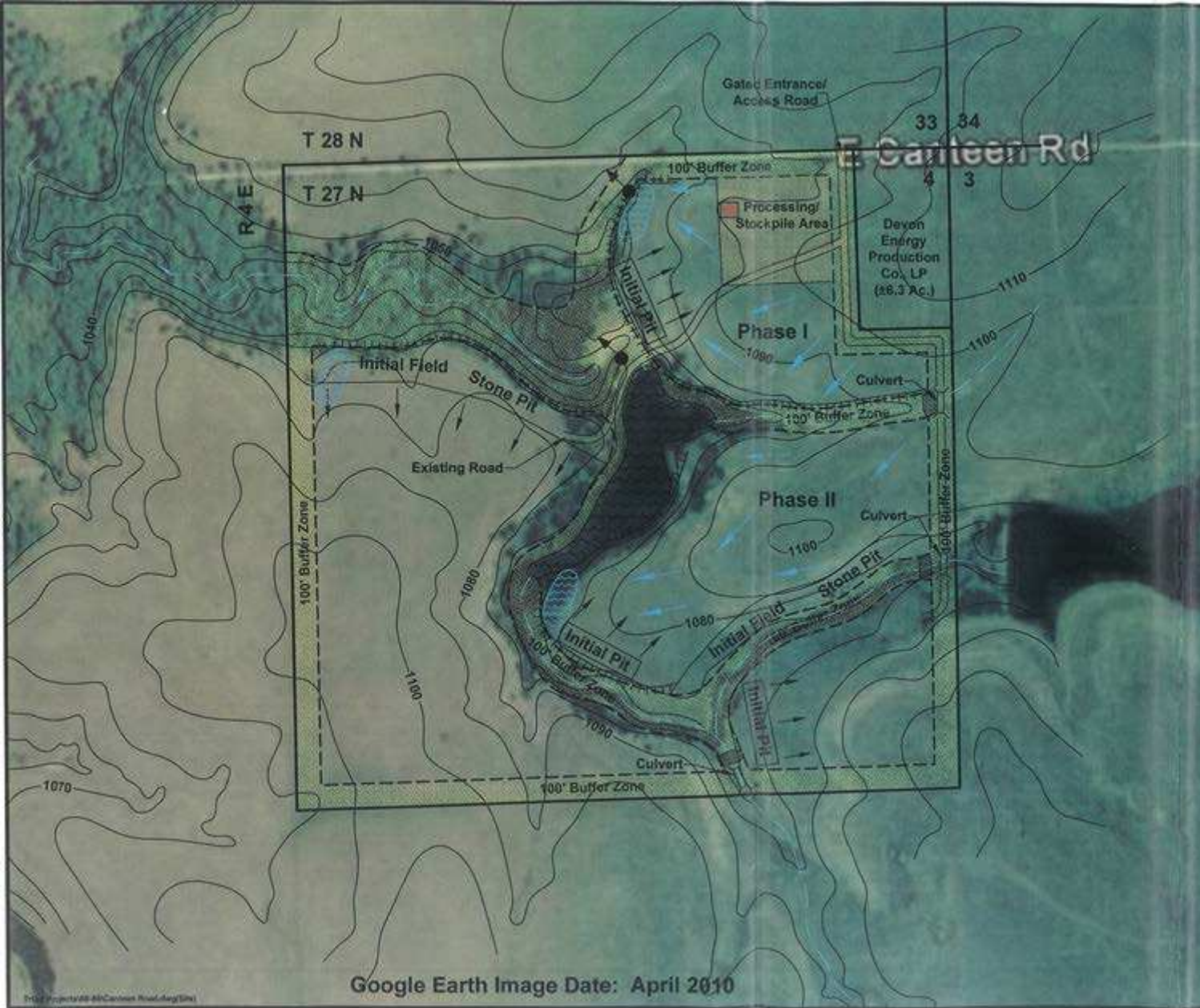


— Existing Contours  
 - Proposed Contours

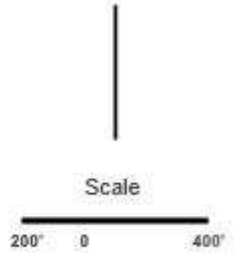


Summer's BlueLake Quarry, LLC.  
 Blue Lake Quarry Reclamation Map

Google Earth Image Date: 14 April 2010

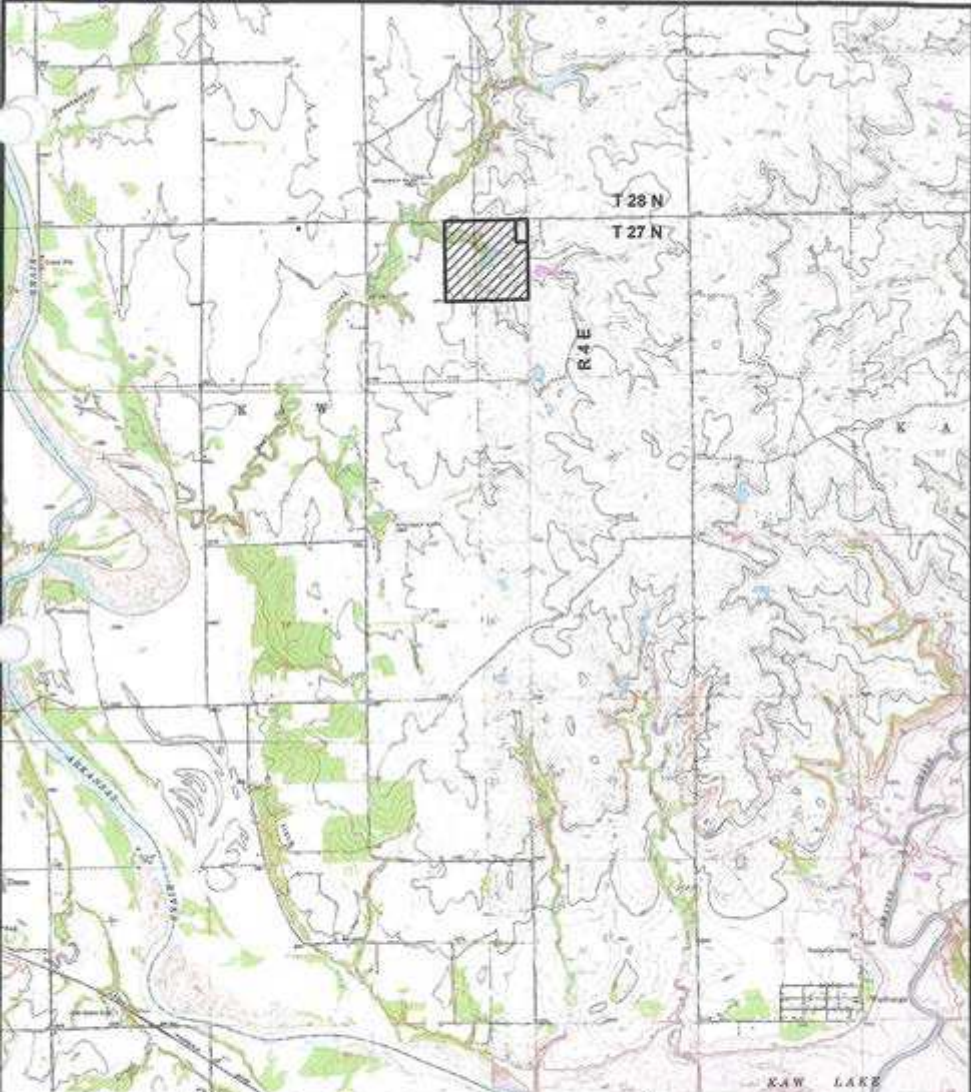


- [J] Rocked Entrance/ Processing Area
- D Buffer Zone
- '- Outfall
- Fuel Tank/Containment
- a Existing Lake
- @ Proposed Sed. Trap
- I Rock Outlet Protection (As Needed)
- Existing Contours
- Existing Road
- Control Berm
- Unnamed Tributary



Summers Blue Lake Quarry, LLC.  
 Blue Lake Quarry  
 SWPPP (OKR05) Site Map

Google Earth Image Date: April 2010



Portions of the Kaw City & Uncas Quad Maps, Kay County, OK.

Scale

2500' 0 5000'

**Summers Blue Lake  
Quarry, LLC.**  
Blue Lake Quarry  
General Location Map

Sheet No.

1000

0000

10/2013

Produced by  
Summers Blue Lake Quarry, LLC



### NON-COAL LOCATION MAP

The Mineral and Reclamation Act, 45 D.S. 1981 §701-726

Period Of:

2013 to 2033

MINING PERMIT IS NOT TRANSFERABLE

~~Unless~~ reason whatever, you stop operating at the location you show here, notify the Department of Mines immediately as your liability continues in effect until the Department is notified and/or completed reclamation is approved.

COMPANY: Summers Blue Lake Quarry, LLC

MINERAL TO BE MINED: Limestone

ACRES THIS SECTION TO BE COVERED BY PERMIT & BOND: +/- 154 (Permit) +/- 24 (Bond)

TOTAL ACRES TO BE COVERED BY PERMIT: +/- 154

SECTION: 4 TOWNSHIP: 2\_7\_N RANGE: 4\_E COUNTY: Kay, Oklahoma

One Section divided into 10 ~~acres~~ tracts.

